



Orchard Drive, Epping, CM16

BUTLER & STAG



This fabulous three bedroom semi-detached family home is immaculately presented and offers flexible living accommodation coupled with a superb garden and first class location.



Freehold

- Semi-Detached Family Home
- Three Bedrooms
- Stunning Throughout
- Open Plan Kitchen/Dining Room
- Downstairs Shower Room/Spacious Utility Room
- Off Street Parking/80' Rear Garden

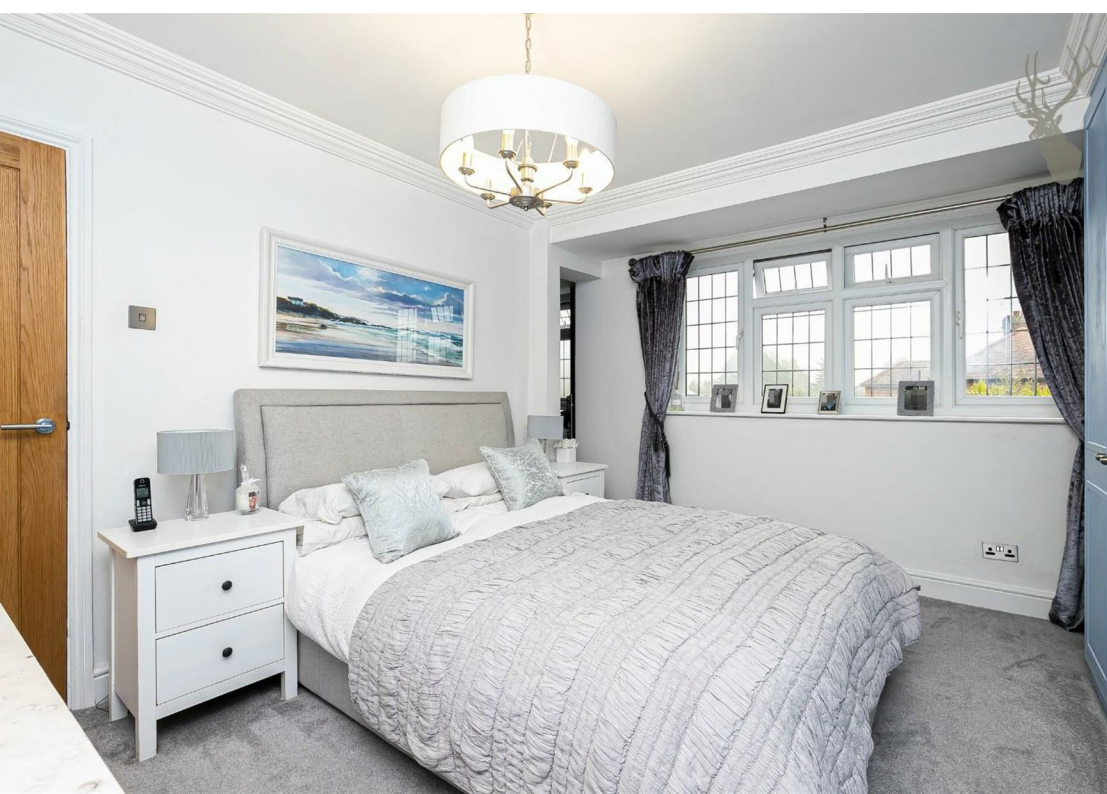
The property comprises of a large open-plan modern kitchen/breakfast room with wonderful views looking onto the garden, a spacious utility room, a shower room with WC, with an added bonus of a large study room/play room which is currently being used as a fourth bedroom.

On the first floor, there are three bedrooms including the generous master with extensive built in wardrobes with the same in the second bedroom. The stylish family bathroom, is fully tiled with bath, wash basin and wc.

Externally, a brick pave forecourt provides off street parking space leading to the attached garage. A special feature of the property is the South facing rear garden that is very well stocked with a variety of trees and shrubs, with a central lawn and an excellent size patio area.

Perfectly located for the village shops, pubs and restaurants and around a five minute walk to the Central Line Underground Station. Bordered by the historic Epping Forest, with the busy neighbouring towns of Epping and Loughton close by, Theydon Bois still retains the charm and character of a quintessential village with its strong community spirit, local activities, nearby golf, tennis cricket clubs plus of course, the centrepiece village green and pond.





Orchard Drive

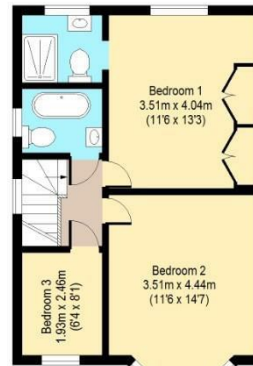
Ground Floor

Approx. 125.79 Sq. meters (1354 Sq. feet)



First Floor

Approx. 44.87 Sq. meters (483 Sq. feet)



Total area: approx(Including Garage): 170.66 Sq. meters (1837 Sq. feet)
Total area: approx(Excluding Garage): 153.94 Sq. meters (1667 Sq. feet)
For illustration purposes only - not to scale
www.lpaplus.com

BUTLER & STAG

☎ 01992 667666

🏠 4 Forest Drive, Theydon Bois, Essex, CM16 7EY

✉ theydon@butlerandstag.com

www.butlerandstag.uk

IMPORTANT NOTICE - These particulars have been prepared in good faith and they are not intended to constitute part of an offer or contract. We have not performed a structural survey on this property and the services, appliances an specific fittings have not been tested. All photographs, measurements, floor plans and distances referred to are given as a guide and should not be relied upon.